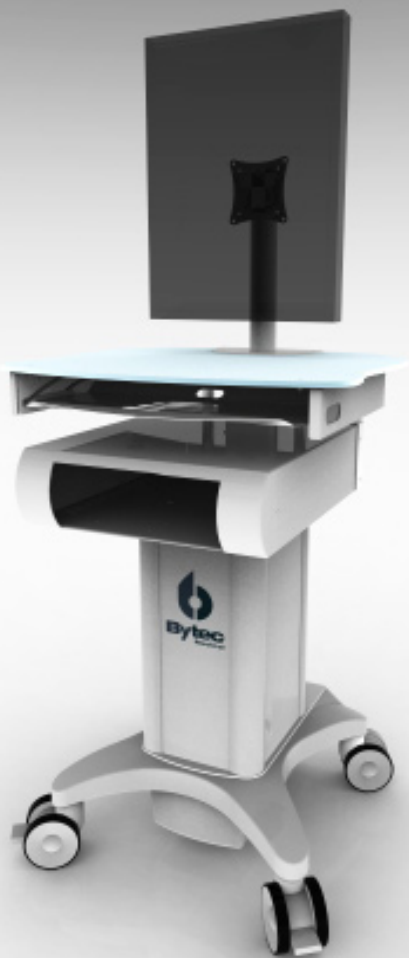


SmartCart™



Flexible mobile computing and power management solution

“Ergonomic design”

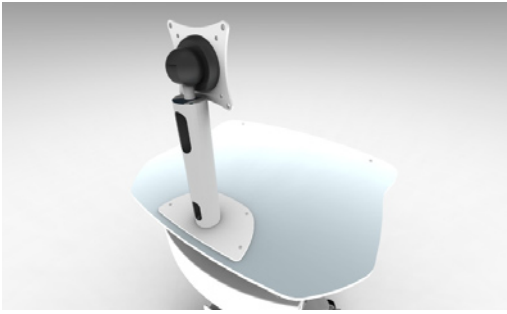
“Flexible”

“Easy-to-clean”

“Highly manoeuvrable”

“Sturdy construction”

Highlights



Ingenious & Easy-to-clean

The SmartCart™ has been designed to be easy to use and easy to clean incorporating integrated cable management behind the displays and concealed wiring for the power supply.

Surfaces are easily accessible to wipe down, using smooth untextured paint and its design focusing on the removal of grooves for dirt to collect. An optional, inorganic, silver based antimicrobial additive is available for all painted parts to provide further protection against infection control.



Power Management

The SmartCart™ features a power management and diagnostic system which allows for mains operated or mobile battery power for your chosen IT solutions. SmartCart™ can power a standard PC, panel PC's or any other compatible laboratory equipment for up to 9 hours.



Height Adjustment

The worktop of the SmartCart™ is height adjustable to suit the operators requirements. Fingertip control's on the side of the unit allow the user to effortlessly raise and lower the work surface. Driven by a powered motor this height adjustment is guaranteed to be smooth and controlled.



Keyboard Tray

Integrated keyboard tray with cleanable runners smoothly slides out from the body of the SmartCart™ providing a convenient storage space and work desk for your keyboard or input device.

Shown here with the Bytecs Medi-key™ wireless keyboard. (Optional)



Highly Manoeuvrable

Premium, heavy duty twin wheeled castors provide smooth mobility to the cart. Robust, lockable castors can take the everyday bumps and knocks associated with a busy medical environment.

For more information or to discuss your specific requirements please call us on 01737 378 800