

Coronis Fusion 6MP DL

6 MegaPixel wide-screen diagnostic color display system



Live free

Smart ideas can make a big difference. Sometimes, they can even change your view...

That is exactly what Coronis Fusion 6MP DL does. Introducing the world's first single-head diagnostic workstation that can be driven as two bezel-free 3MP displays or one wide-screen 6MP display, the ingenious Coronis Fusion 6MP DL heralds a new paradigm of versatility and productivity in diagnostic imaging.

Break free from the limitations of a traditional multi-head setup. Allow yourself the comfort to read all modalities from a single, integrated display system. Allow yourself the freedom to view more, experience more, achieve more... without the hindrance of a center bezel. Step into the unique world of Coronis Fusion 6MP DL.



Everything you expect... and more



PRODUCTIVITY

The freedom to organize your 30-inch desktop as one wide-screen 6MP display or two bezel-free 3MP displays.

CONFIDENCE

Worry-free image quality with third generation I-Guard sensor technology.

VERSATILITY

Grayscale and color imaging on a single, multi-modality display system thanks to Diagnostic Luminance backlight.

PRECISION

Unrivaled contrast, brightness and viewing angle with breakthrough IPS-Pro LCD technology.

UNIFORMITY

Uniform brightness from center to corner through Uniform Luminance Technology.



View more

The full advantage of multi-modality viewing



Pixel-perfect grayscale images have become the trademark of Coronis

display systems. Coronis Fusion 6MP DL continues this legacy by presenting pristine grayscale images, high in brightness and rich in contrast. But diagnostic imaging is no longer a black and white world. Therefore, Coronis Fusion 6MP DL also brings you the full advantage of color modalities like 3D reconstruction, color MRI and PET-CT imaging.

Equipped with the latest IPS-Pro LCD panel and a unique Diagnostic Luminance backlight technology, Coronis Fusion 6MP DL provides an unprecedented brightness of 800 cd/m² and a superb contrast ratio of 800:1. It means that, from now on, grayscale as well as color studies can be read on a single, multi-modality display system. No more need for workflow-interrupting journeys from your PACS workstation to the modality acquisition workstation to interpret color enhanced images.

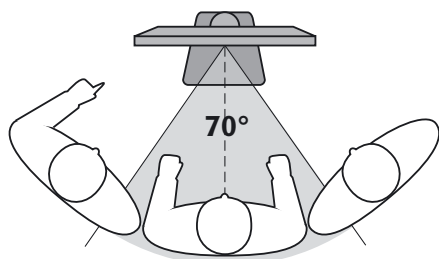
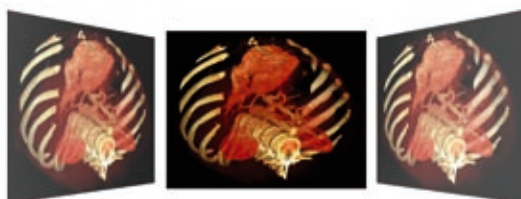


A perfect view from every angle

Conventional LCD systems typically suffer from substantial color and contrast changes when looked at from an angle. Because of this, only a narrow viewing cone perpendicular to the screen offers the accuracy required for diagnostic imaging.

Coronis Fusion 6MP DL overcomes this limitation by adopting superior IPS-Pro technology, a breakthrough LCD architecture that introduces a new level of diagnostic precision from every angle.

Conventional LCD technology

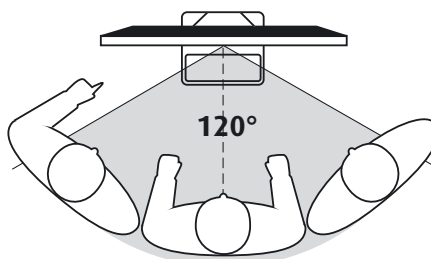
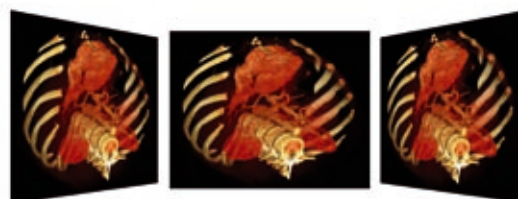


Conventional LCD technology: colors and contrast values change substantially when looked at from an angle

Efficient multi-user viewing

IPS-Pro delivers a maximum viewing angle of 178° and a typical contrast ratio of 800:1. More importantly, IPS-Pro widens the viewing cone in which contrast levels are high enough to detect even the most subtle lesions. With IPS-Pro, this angle is 120°, which is nearly twice the value achieved by other technologies. These unique characteristics turn the Corionis Fusion 6MP DL into a perfect solution for multi-user viewing.

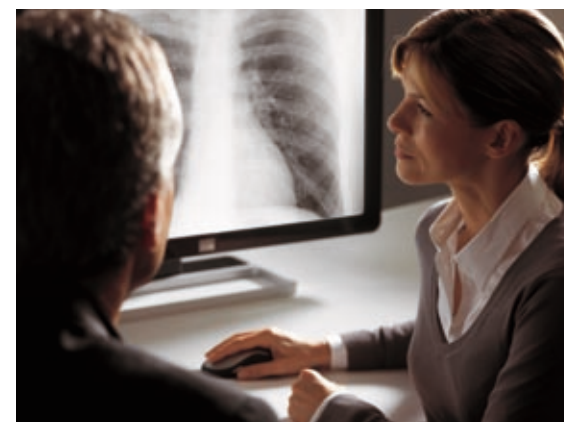
IPS-Pro LCD technology



IPS-Pro delivers diagnostic precision up to a viewing angle of 120°

Enhanced viewing comfort

The uninterrupted wide-screen desktop gives you the freedom to organize your workspace just the way you want it. Thanks to the integrated design, your eyes will no longer be distracted by an intruding bezel. Side-by-side comparison of initial, prior and current studies has never been more comfortable and efficient.



Uninterrupted 30-inch desktop for reduced eye-fatigue and enhanced working comfort



Experience more

Experience true productivity



Coronis Fusion 6MP DL declares a new era of diagnostic flexibility. For the first time, a 30-inch diagnostic color monitor can be used as two uninterrupted 3MP displays or one wide-screen 6MP display. It gives you the freedom to read CR, DR, MR, CT, PET-CT, cath or colonoscopy images, side by side on a single wide-screen viewport without a disturbing center bezel. What a smart way to optimize your productivity.

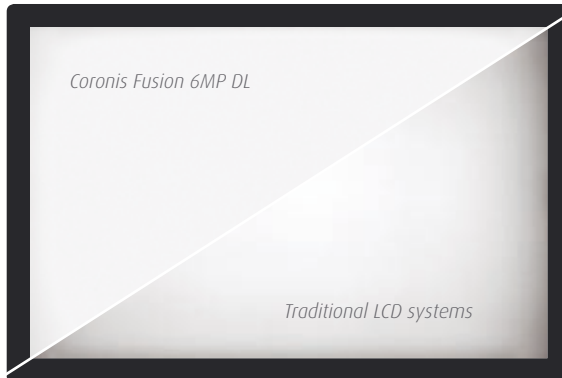
A world of possibilities for:

- high-resolution PACS
- color ultrasound
- CAD
- color Doppler
- MRI
- pathology
- PET-CT fusion
- CT
- echo
- cardiogram
- chest radiography

Experience diagnostic precision from center to corner



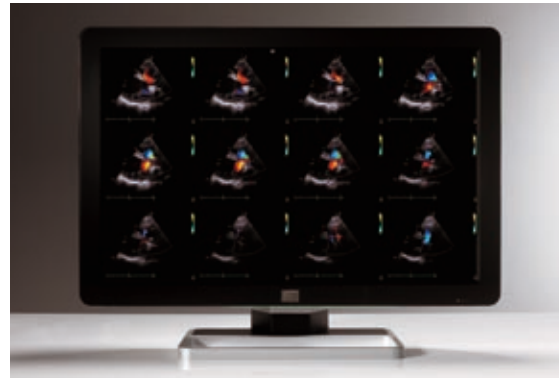
Traditional LCD systems often suffer from luminance non-uniformities of up to 30%. With Barco's unique Uniform Luminance Technology (ULT) however, luminance is spread equally over the entire 30-inch screen. Supported by a revolutionary new architecture that reduces native backlight non-uniformity by 50%, ULT counteracts non-uniformities on your screen to less than 10%. As a result, your diagnostic images are DICOM compliant from center to corner.



Uniform brightness across the screen with Uniform Luminance Technology

Experience dynamic images without artifacts

State-of-the-art LCD technology, featuring a very short response time, sets Coronis Fusion 6MP DL apart as a true multi-modality display. The system renders fast moving images, such as ultrasound and cardio, in real time with unmatched quality and precision.



High-grade dynamic images thanks to fast LCD response

Experience high durability



The system's diagnostic front glass protects the valuable LCD panel against damage from intensive use in clinical environments and allows for safe and easy cleaning. Moreover, the glass's non-reflective coating improves your diagnostic experience and keeps reflections very low.



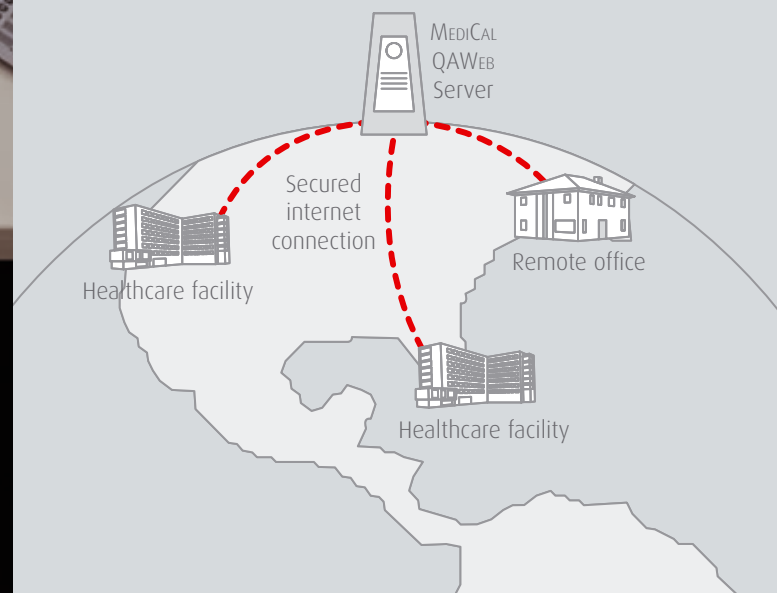
High durability and excellent diagnostic quality with non-reflective protective front glass

Achieve more

Achieve automated Quality Assurance



Coronis Fusion 6MP DL comes with an innovative softcopy QA solution that brings a new degree of transparency to your QA routine. Together with the intelligent I-Guard sensor, MediCal QAWeb provides an easy-to-use, web-based tool for calibration and QA, ensuring continuous diagnostic quality and maximum uptime of your workstation. Running in the background, MediCal QAWeb allows you to continue diagnoses while automated QA checks are being executed.



Achieve maximum efficiency in 2D and 3D



The rising demand for diagnostic images and the massive growth of image datasets put an increasing pressure on radiologists to enhance productivity. The high-performance MXRT-5200 display controller of Coronis Fusion 6MP DL responds to this by bringing unprecedented speed and precision. The 10-bit display controller, featuring unique High Dynamic Range, generates the complete data set with 1024 simultaneous levels of gray. When used for color enhanced modalities or 3D PACS, the MXRT-5200 delivers 30-bit color precision.



High-performance display controller for maximum speed and precision

Achieve continuous DICOM conformance



The integrated I-Guard sensor continuously monitors and adjusts the luminance and chrominance in accordance with DICOM P14 specifications. In combination with the intelligent MediCal QAWeb software, the patented I-Guard performs fast and easy DICOM calibration, automatic Quality Assurance testing and remote assessment of the display's diagnostic area. The third generation I-Guard has been further perfected for color imaging with increased read-out speed and sensitivity down to the lowest luminance levels.

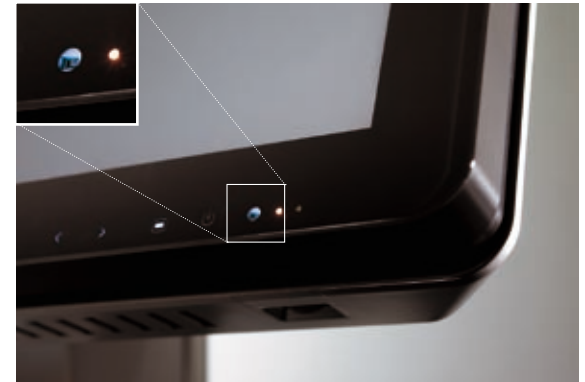


Continuous diagnostic confidence thanks to third generation I-Guard technology

Achieve diagnostic confidence under changing light conditions



An intelligent Ambient Light Compensation (ALC) system assures that Coronis Fusion 6MP DL remains DICOM P14 compliant under all lighting conditions by adapting its brightness relative to the ambient light level in the room. In combination with the proven MediCal QAWeb quality assurance system, the system will also notify the administrator if the ambient light level exceeds a predefined threshold.



Continuous DICOM P14 compliance under changing lighting conditions with integrated Ambient Light Compensation sensor

Technical specifications

Display	MDCC-6130
Display technology	TFT AM LCD IPS-Pro technology
Active screen diagonal	771,44 mm (30.4")
Active screen width	654,36 mm (25.76")
Active screen height	408,58 mm (16.09")
Pixel pitch	0,1995 mm (0.00785")
Resolution	3280 x 2048 pixels
Maximum luminance (typical)	800 cd/m ²
DICOM calibrated luminance (native white)	500 cd/m ²
Contrast ratio (dark reading room, typical)	800:1
Viewing angle (typ)	178° (10:1)
Half contrast angle (typ)	120° (400:1)
Response time (typ)	9 ms (tr+tf)/2
Display LUT	10-bit in / 12-bit out
Video input	2x DVI-D Dual-Link
Image stabilization	Front of screen I-Guard light sensor
Uniform Luminance Technology	Yes
Display dimensions (w x h x d)	High pos.: 762 x 571,5 x 127 mm (30.0 x 22.5 x 5.0")
Display weight (incl. stand)	29,2 kg (64.8 lbs)
Approvals	<p>EMISSION - Europe: (EN60601-1-2) EN 55011 Level-B, USA: FCC Level-B, Canada: ICES-001 Level-B, Korea: KETI (eK) Level-B, China: CCC Level-B</p> <p>MEDICAL SAFETY - Europe: CE, EN60601-1 DEMKO, USA: UL 60601-1, Canada: c-UL CSA C22.2 no 601.1, China: CCC GB4943-2001, Korea: KETI (eK), Japan: PSE</p>
Housing	UL 94-V0 compliant plastics
Operational temperature range	+0° to +35° C (+32° to +95° F)
Within spec temperature range	+15° to +30° C (+59° to +86° F)
Power consumption @ 230 VAC (typical)	166 W

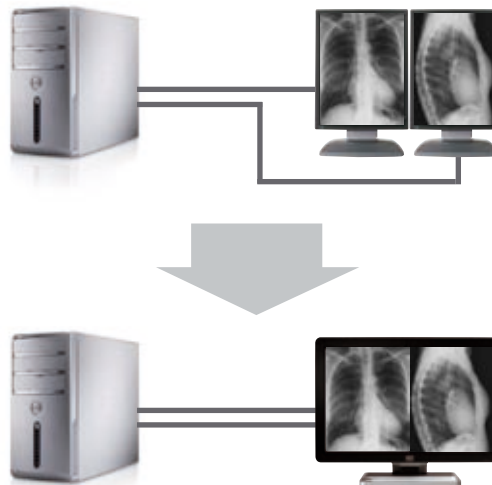
IPS is a registered trademark.
 Technical specifications are subject to change without prior notice.

Display controller	BarcoMed MXRT-5200
SYSTEM REQUIREMENTS	
Bus compatibility	PCIe x16
Power consumption	Computer power supply of 375W or higher (assumes a fully loaded system)
Form factor	98,4 x 228,6 x 15,9 mm (3.86" x 9.0" x 0.63")
Operating system	MS Windows® XP 32/64-bit, Server 2003, 2008, Vista XPDM, WDDM
Platforms	Intel® and AMD architectures
SPECIFICATIONS	
Graphics accelerator	ATI FireGL™
Display memory	512 MB GDDR4
Look-Up Table	24 bit in / 24 bit out (8 bit per color channel)
Pixel depth	24 bit / 30 bit (HDR mode)
Electrical standard	Dual link DVI complying to v1.0 specification
Direct 3D HW support	Microsoft DirectX v10.0/v9.0, Vertex Shader v4.0/v3.0, Pixel Shader v4.0/v3.0
OpenGL HW support	OpenGL® 2.1
Connectors	Two DVI-I connectors
Supported resolutions	Up to 3280 x 2048 (VGA at boot-up)
APPROVALS / ENVIRONMENTAL	
Approvals and compliance	FCC part 15 Class B, CE, UL-60950-1, BMSI CNS, CISPR-22/24, VCCI, CSA C22.2, EU RoHS, MIC
Operational temperature	0° to 55°C (32° to 131°F)

MediCal QAWeb Quality Assurance System	
Remote QA management	✓
Compliance with the latest QA standards	✓
Effortless asset management	✓
Automated reporting	✓

Plug and Play setup

Coronis Fusion 6MP DL can be used to replace legacy dual-head systems quickly and without hassle. Upgrades to your Operating System or applications are not needed. Simply connect the new display to your existing workstation and you are ready to go.



First-rate support wherever you are



Built to deliver maximum peace of mind, Coronis Fusion 6MP DL comes with a 5 year warranty. In addition, Barco offers an array of dedicated support services to help you reduce unscheduled downtime and keep your expenses under control. Barco's global organization is your guarantee for professional support, wherever you are, whenever you need it.

Respecting the environment



Coronis Fusion 6MP DL has been designed with respect for the environment. The system complies with RoHS and WEEE regulations. Moreover, the advanced IPS-Pro technology unites performance and energy-efficiency like no other LCD technology.

Barco medical imaging

Learn more

Barco, a global market leader in visualization solutions for Picture Archiving and Communication Systems, has been developing visionary medical imaging solutions for almost twenty years. Driven by experience and innovation, Barco presents a full range of state-of-the-art solutions for radiological, surgical and clinical imaging. From acquisition to display, from image processing to quality assurance, Barco's hardware and software solutions deliver the perfection patients deserve.

Barco's commitment to quality has earned the trust of customers from all over the world, who partner with Barco to meet their most demanding imaging challenges. This partnership approach is also reflected in Barco's worldwide customer service network, ensuring professional support, wherever you are, whenever you need it.

Europe, Middle East, Africa & Latin America

Phone: +32 56 233 557
sales.medical.eu@barco.com

North America

Phone: +1 866 302 7939
sales.medical.us@barco.com

Taiwan

Phone: +886 2 8221 6868
sales.medical.apac@barco.com

South Korea

Phone: +82 2 2175 8900
sales.medical.apac@barco.com

China

Phone: +86 21 6091 2222
sales.medical.apac@barco.com

Singapore

Phone: +65 6243 7610
sales.medical.apac@barco.com

India

Phone: +91 120 4020000
sales.medical.apac@barco.com

Australia

Phone: +61 3 9646 5833
sales.medical.apac@barco.com

Japan

Phone: +81 3 3279 0771

K5906180 rev. 02 0109 © 2009 Barco